



## **Vented Gas Log Sets**

**Elite Heat Burner Series  
Sand Pan Burner Series  
Slope Glaze Burner Series**

---

Advantage Refractory Log Set



## More Heat. More Flame.

The Elite Radiant Vented Burners deliver more heat to your room and more flames to your fireplace. With their unique construction and integrated radiant fiber heat sink, these burners produce dancing flames without using sand or vermiculite. Feel more heat radiate back into your room, all while using less fuel than a standard vented burner.

### Available Sizes

- 18-inch (33,000 BTU)
- 24-inch (55,000 BTU)
- 30-inch (65,000 BTU)

### Control Options

- Match Light
- Manual Safety Pilot
- Millivolt
- Variable Remote
- IPI with Variable Remote



**Pioneer 24-Inch (LPR) Refractory Log Set**



**Kensington Forest 18-Inch (LKF) Ceramic Fiber Log Set**



**Kensington Forest 24-Inch (LKF) Ceramic Fiber Log Set**



# Triple Burners

## Triple Burners

The Triple Burner features two large tube burners, plus a smaller ember bed burner. It creates massive flames to complement the large log sets.

Available in:

Triple Burner Size	UL Certified* Match-Light Nat Gas	UL Certified Nat Gas **	Non-Certified Nat Gas only	Fits Log Sets
21-inch	Match-light 75,000 BTUs	Manual or Millivolt 75,000 BTUs	NA	LA21
24-inch	Match-light 75,000 BTUs	Manual or Millivolt 75,000 BTUs	NA	LA24, LAV24SSK
30-inch	Match-light 90,000 BTUs	Manual or Millivolt 90,000 BTUs	NA	LA30, LAV30SSK
36-inch	NA	NA	Match Light only 120,000 BTUs	LA36, LAV36SSK
42-inch	NA	NA	Match Light only 140,000 BTUs	LA42, LAV42SSK

\* Accepts Manual and Millivolt Nat and LP accessory Valve Kits

\*\* LP Conversion Kits available



**Triple Burner (AV)**



**Advantage (LA) Refractory Log Set shown with Triple Burner**



**Advantage Refractory Log Set shown with Skyscraper (LAV) Accessory Refractory Logs**

# Vented Sand Pan Burners

## Double Sand Pan Burners

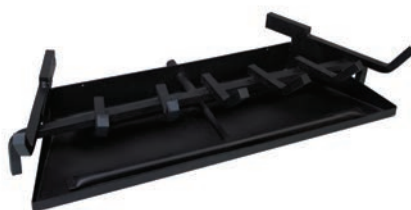
Our Double Burner features two tube burners in a tapered sand pan that fits most conventional fireplaces. It creates large swirling flames with a large ember bed.

Available in:

Double Burner Size	UL Certified* Match-Light Nat Gas	UL Certified Nat Gas **	Fits Log Sets
18-inch	Match-light 75,000 BTUs	Manual or Millivolt 75,000 BTUs	LGLO18, LTH718, LTH1118, LFR18, LPR18
24-inch	Match-light 75,000 BTUs	Manual or Millivolt 75,000 BTUs	LGLO24, LTH724, LTH1124, LKF, LFR24, LPR24
30-inch	Match-light 90,000 BTUs	Manual or Millivolt 90,000 BTUs	LTH1130, LTH730, LGLO30, LKF, LFR30, LPR30
36-inch	Match-light 90,000 BTUs	NA	LTH1136, LPR36

\* Accepts Manual and Millivolt Nat and LP accessory Valve Kits

\*\* LP Conversion Kits available



**Double Burner (BX)**

## See-Through Burners

Our See-Through Burner features three tube burners in a rectangular sand pan to fit most see-through and peninsula fireplaces. Our see-through Log Sets include a second “Front Log.”

Available in:

See-Through Burner Size	UL Certified* Match-Light Nat Gas	UL Certified Nat Gas **	Fits See-Through Log Sets
18-inch	Match-light 75,000 BTUs	Manual or Millivolt 75,000 BTUs	LGLO18ST, LTH718ST, LTH1118ST
24-inch	Match-light 75,000 BTUs	Manual or Millivolt 75,000 BTUs	LGLO24ST, LTH724ST, LTH1124ST
30-inch	Match-light 90,000 BTUs	Manual or Millivolt 90,000 BTUs	LGLO30ST, LTH730ST, LTH1130ST

\* Accepts Manual and Millivolt Nat and LP accessory Valve Kits

\*\* LP Conversion Kits available



**See-Through Burner (B3)**  
(requires See-Through Log Set)



**Embers, Rock and Sand**  
(included with all Double and See-Through Burners)

# Vented Log Sets for Sand Pan Burners



**Frontier (LFR) Refractory Log Set**



**Pioneer (LPR) Refractory Log Set**



**Treehouse 7 (LTH7) Refractory Log Set**



**Treehouse 11 (LTH11) Refractory Log Set**



**Great Lakes Oak (LGLO) Refractory Log Set**



## Slope Glaze Vented Burners and Gas Log Sets

A vented gas log set makes a great alternative to the hassle of building a log fire in your wood-burning fireplace. Just like a wood fire, a vented gas log set provides plenty of mesmerizing flames and flickering light. And when you are ready for bed, just flick the switch to turn it off – no waiting for the embers to die down. Vented log sets are considered decorative systems and must be installed in a vented fireplace with the damper open and may not operate by thermostat.

- Available in LP and Natural Gas in 18, 24, and 30-inch models - up to 75,000 BTUs
- UL listed and include either a rear-mounted manual or millivolt valve
- On/off remote control or wall switch for Millivolt Vented Burners
- Choose from log sets in ceramic fiber, refractory concrete, and Burncrete®



Super Stacked Wildwood Refractory Log Set (LS24WRS)



Driftwood Burncrete® Log Set (LS24CD)



Ponderosa Refractory Log Set (LS24P)



Super Sassafras Refractory Log Set (LS24RSS)

# Measuring Minimum Firebox Dimensions

## Elite Heat

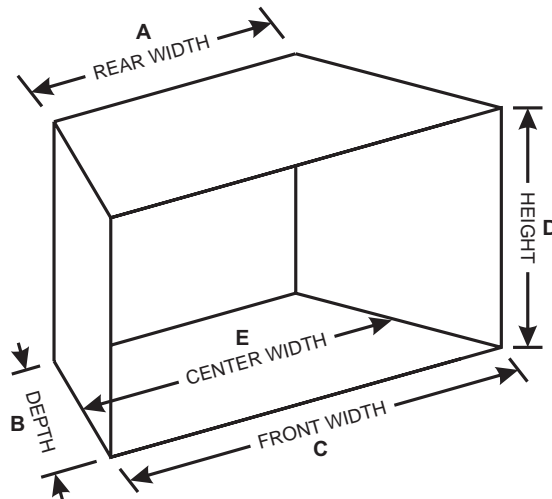
Log Set Size	Models	Rear Width A	Depth B	Front Width C	Height D
18-inch	Manual, MV, IPI	16	16	20	20
	Match Light	16	16	20	20
24-inch	Manual, MV, IPI	26	16	30	20
	Match Light	22	16	26	20
30-inch	Manual, MV, IPI	30	16	36	20
	Match Light	26	16	32	20

## Triple Burners

Log Set Size	Models	Rear Width A	Depth B	Front Width C	Height D
21-inch	Manual, MV	22	18	32	18
	Match Light	22	18	26	18
24-inch	Manual, MV	26	18	36	19
	Match Light	26	18	30	19
30-inch	Manual, MV	30	18	42	21
	Match Light	30	18	36	21
36-inch	Match Light	34	18	42	21
42-inch	Match Light	38	18	48	21

## Double and See-Through Burners

Log Set Size	Models	Rear Width A	Depth B	Front Width C	Height D
18-inch	Manual, MV, IPI	22	14	30	18
	Match Light	22	14	26	18
24-inch	Manual, MV, IPI	26	16	36	18
	Match Light	26	16	30	18
30-inch	Manual, MV, IPI	30	18	42	18
	Match Light	30	18	36	18



		<b>Installation and Safety</b>	
		Refer to your Owner's Manual for complete installation including minimum firebox dimensions and safety information.	
<b>Warranty for All Models</b>		<b>Gas Inlet for All Models</b>	
3-Year Warranty – Vented Log Sets and Burners		Type of Gas	Natural or LP
1-Year Parts Warranty – Remote Control Systems		Iron Pipe Size (N.P.T.)	1/2 inch

Member of the following industry associations:



Empire is committed to continuous product improvement; specifications are subject to change without notice. Dimensions in this brochure are approximate; read and follow the framing dimensions in the owners manual supplied with your Empire product. Flame size, shape, and color will vary from photos.



918 Freeburg Ave.  
Belleville, IL 62220-2623  
e-mail: info@empirecomfort.com

WMH-00957 05/07/20